



DAU

HBS1GQ SERIES METAL BUTTON

Mounting hole size: Ø19, Ø22, Ø25, Ø30mm;
 Strong Metal texture and elegant appearance design;
 Double break snap-action changeover contacts switch with four terminals;
 Connection method: Solder Pin terminal and Screw terminal;
 Illuminated button use Highlight led, built in dropping resistor, avoid soldering,
 could choose different led voltage ,produce bi-color led;
 Head above the panel mount could be IP65 waterproof, IK10 explosion-proof.



HBS1GQ 金属按钮系列



型号说明 Model Explanation



性能参数 Parameters

开关额定值 Switch Rating	AC-5A/250V	表面防爆等级 Explosion proof grade	IK08(针对金属材质)
环境温度 Operating Temperature	-40°C ~ +80°C	防护等级 Degree of Protection	IP 65
接触电阻 Contact Resistance	≤50MΩ	操作压力 Operating Pressure	3-5N
绝缘电阻 Insulation Resistance	≥1000MΩ	操作行程 Operating Stroke	3mm
介电强度 Dielectric Strength	AC1780V	螺母扭矩 Screw Torque	5-14N
机械寿命 Mechanical Life	≥1000,000次	外壳 Shell material	黄铜镀镍/不锈钢 Nickel-plated Brass/Stainless Steel
电气寿命 Electrical Life	≥50,000次	材质 Material	按钮 Press key material: 不锈钢 Stainless steel 底座 Base material: 塑料 Plastic base 触点 Contact material: 银合金 Silver alloy
开关结构 Contact Type	双断点快动触头 Double-break fast-motion changeover contact		
开关组合 Contact Configuration	1NO 1NC		

LED灯珠规格 LED Lamp Specifications

灯珠类型 Lamp Type	双向LED灯珠(交直流通用) Bi-directional LED lamp (AC DC Universal)	额定电流 Rated Current	约20mA about 20mA
额定电压 Rated Voltage	1.8V、2.8V、6V、12V、24V、36V、110V、220V	发光颜色 Color	R G B W R G B
		寿命 Life	50000小时(参考值) 50000 hours (reference value)

注: 如单向直流LED灯珠可定做; 其他电压规格可按要求定做。
Note: Unidirectional DC LED lamp can be customized if needed; other voltage specifications could be special made

灯珠等效电路 Lamp Equivalent Circuit	单色发光 Monochrome light	双色发光 Double color light
	采用交直流通用的LED灯珠, 接线端子无正负极区分; 灯珠内置保护电阻, 不需外接。 AC-DC Universal LED lamp, terminal differentiate between positive and negative; lamp beads built-in protection resistors, no external	
		高亮LED发光, 基本发光颜色5种:(红绿黄蓝白)其它可定制; 双色发光及基本型是切换正负极。

开关结构说明 Switch Structure Explanation

型式 Type	符号 Symbol	示意图 Diagram	说明 Explanation
Za			具有四个端子的双断点快动转换触头开关 Double break snap-action changeover contacts switch with four terminals.

引脚说明 Pin Description

示意图 Diagram	说明 Explanation
	<ul style="list-style-type: none"> 1、2为常闭触头NC; 3、4为常开触头NO; +、- 脚为灯珠引脚, 常规灯珠配置无正负极区分; 灯珠与开关相对独立, 可通过开关或外围电路控制灯珠状态。
	<ul style="list-style-type: none"> Pin1, Pin2 is normally closed contact NC; Pin3, Pin4 is normally open contact NO; +、- pins are LED lamp pins, normal lamp configuration has no differentiate between positive and negative; LED and switch pin are separated, but switch and external circuit can control the LED state by connecting the LED pin.

HBS1GQ Series Metal Pushbutton Switches



部分产品焊接注意事项 Welding Precautions

任何不正确的焊接操作都可能导致产品塑料变形、开关接触不良等。用户在使用引脚式按钮开关、信号灯时, 因焊接不当导致产品损坏的现象时有发生, 故敬请各位用户在接线操作时务必注意以下几点:

- 选择合适的电烙铁, 加快焊接速度, 建议使用30W以下电烙铁在320°C时2秒内完成焊接。
- 助焊剂必须适量, 焊接时尽量将开关引脚朝下。
- 尽量采用插线端子连接, 避免焊接连接。

Any improper welding operation may lead to product plastic deformation, poor switch contact. Users using pin-type button switches, lights, due to improper welding damage to the product. Phenomenon occurs from time to time, so please be sure to pay attention to the following points in the wiring operation:

- Choose the right electric iron, speed up the welding speed, it is recommended to use the following 30W electric iron at 320 °C When 2 seconds to finish welding.
- Flux must be moderate, try to switch the pin down when welding.
- Try to use plug-in terminals to avoid welding connections.

防护与安装说明 Protection and installation instructions

金属按钮开关外壳采用金属材料, 与塑料开关相比, 不仅增强了其美观性, 外观颜色可多样化, 并且大幅度提升了头部安装面板以上其防尘防水性能、防爆性能及防腐性等特点。防水等级IP65, 防爆能力IK08。

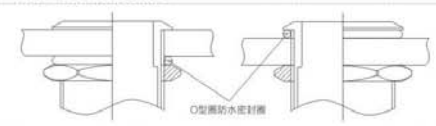
Pushbutton use metal housing, not only the appearance would be more beautiful and multi-colorful compared with plastic indicator, but also enhance the dustproof and waterproof, explosion resistance and corrosion resistance performance of the head (above the panel mount). etc. IP65 waterproof, Explosion-proof IK08.

内部P防尘、防水结构



内部防水密封圈

外部O型密封圈安装方法



O型圈防水密封圈

标识定做 Identification custom

金属按钮开关的按键表面可以激光刻字、图案或发光文字与图案, 可根据客户要求定制。具有新颖与美观性, 并替代指示标牌的作用。

The surface of the key metal button switch, can be laser engraving patterns or luminous words and patterns, can be customized according to customer requirements, with novel and beautiful appearance, and replace the role of signs.

激光刻字效果图



激光刻穿发光效果图



符号定制举例



定制尾部接线方式 Terminal can be customized



安装效果预览 Installation Effect Preview



HBS1GQ 金属按钮系列



HBS1GQ-11 ■/J/□

- 安装孔尺寸: Ø19mm
- 头部形状: 平圆形
- 开关额定值: 5A/250VAC
- 开关组合: 1NO 1NC
- 操作类型: 自复式/自锁式
- 接线类型: 接线插片
- 外壳材料: 不锈钢
- 防护等级: IP65, IK10

- Mounting Hole Size: Ø19mm
- Shape: Flat Round
- Switch Rating: 5A/250VAC
- Contact Configuration: 1NO 1NC
- Operation Type: Momentary/Latching
- Terminal Type: Pin Terminal
- The Crust Material: Stainless Steel
- Protection Degree: IP65, IK10

HBS1GQ-11 ■/L/□

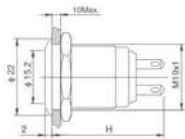
- 安装孔尺寸: Ø19mm
- 头部形状: 平圆形
- 开关额定值: 5A/250VAC
- 开关组合: 1NO 1NC
- 操作类型: 自复式/自锁式
- 接线类型: 接线插片
- 外壳材料: 不锈钢
- 防护等级: IP65, IK10

- Mounting Hole Size: Ø19mm
- Shape: Flat Round
- Switch Rating: 5A/250VAC
- Contact Configuration: 1NO 1NC
- Operation Type: Momentary/Latching
- Terminal Type: Screw Terminal
- The Crust Material: Stainless Steel
- Protection Degree: IP65, IK10

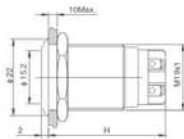
HBS1GQ-11D ■/J/△/▲/□

- 安装孔尺寸: Ø19mm
- 头部形状: 平圆形带点灯
- 开关额定值: 5A/250VAC
- 开关组合: 1NO 1NC
- 操作类型: 自复式/自锁式
- 接线类型: 接线插片
- 灯珠颜色: 红/绿/黄/橙/蓝/白(双色可选)
- 外壳材料: 不锈钢
- 防护等级: IP65, IK10

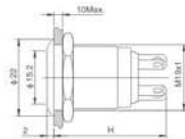
- Mounting Hole Size: Ø19mm
- Shape: Flat Round Dot Illuminated
- Switch Rating: 5A/250VAC
- Contact Configuration: 1NO 1NC
- Operation Type: Momentary/Latching
- Terminal Type: Pin Terminal
- Lamp Color: Red/Green/Yellow/Orange Blue/White(Could be bi-color LED)
- The Crust Material: Stainless Steel
- Protection Degree: IP65, IK10



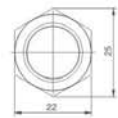
H图: 自锁式为32 自锁式为38
H could be Momentary type 32 Latching type 38



H图: 自锁式为32.5 自锁式为39.5
H could be Momentary type 32.5 Latching type 39.5



H图: 自锁式为32 自锁式为38
H could be Momentary type 32 Latching type 38



HBS1GQ Series Metal Pushbutton Switches



HBS1GQ-11D ■/L/△/▲/□

- 安装孔尺寸: Ø19mm
- 头部形状: 平圆形带点灯
- 开关额定值: 5A/250VAC
- 开关组合: 1NO 1NC
- 操作类型: 自复式/自锁式
- 接线类型: 接线插片
- 灯珠颜色: 红/绿/黄/橙/蓝/白(双色可选)
- 外壳材料: 不锈钢
- 防护等级: IP65, IK10

- Mounting Hole Size: Ø19mm
- Shape: Flat Round Dot Illuminated
- Switch Rating: 5A/250VAC
- Contact Configuration: 1NO 1NC
- Operation Type: Momentary/Latching
- Terminal Type: Screw Terminal
- Lamp Color: Red/Green/Yellow/Orange Blue/White(Could be bi-color LED)
- The Crust Material: Stainless Steel
- Protection Degree: IP65, IK10

HBS1GQ-11E ■/J/△/▲/□

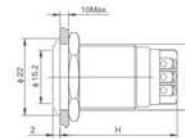
- 安装孔尺寸: Ø19mm
- 头部形状: 平圆形带点灯
- 开关额定值: 5A/250VAC
- 开关组合: 1NO 1NC
- 操作类型: 自复式/自锁式
- 接线类型: 接线插片
- 灯珠颜色: 红/绿/黄/橙/蓝/白(双色可选)
- 外壳材料: 黄铜镀镍/不锈钢
- 防护等级: IP65, IK10

- Mounting Hole Size: Ø19mm
- Shape: Flat Round Ring Illuminated
- Switch Rating: 5A/250VAC
- Contact Configuration: 1NO 1NC
- Operation Type: Momentary/Latching
- Terminal Type: Pin Terminal
- Lamp Color: Red/Green/Yellow/Orange Blue/White(Could be bi-color LED)
- The Crust Material: Stainless Steel
- Protection Degree: IP65, IK10

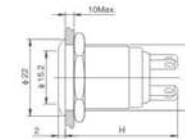
HBS1GQ-11E ■/L/△/▲/□

- 安装孔尺寸: Ø19mm
- 头部形状: 平圆形带点灯
- 开关额定值: 5A/250VAC
- 开关组合: 1NO 1NC
- 操作类型: 自复式/自锁式
- 接线类型: 接线插片
- 灯珠颜色: 红/绿/黄/橙/蓝/白(双色可选)
- 外壳材料: 黄铜镀镍/不锈钢
- 防护等级: IP65, IK10

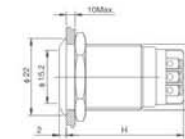
- Mounting Hole Size: Ø19mm
- Shape: Flat Round Ring Illuminated
- Switch Rating: 5A/250VAC
- Contact Configuration: 1NO 1NC
- Operation Type: Momentary/Latching
- Terminal Type: Screw Terminal
- Lamp Color: Red/Green/Yellow/Orange Blue/White(Could be bi-color LED)
- The Crust Material: Stainless Steel
- Protection Degree: IP65, IK10



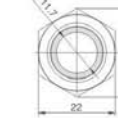
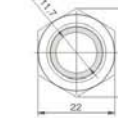
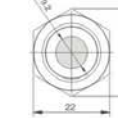
H图: 自锁式为32.5 自锁式为39.5
H could be Momentary type 32.5 Latching type 39.5



H图: 自锁式为32 自锁式为38
H could be Momentary type 32 Latching type 38



H图: 自锁式为32.5 自锁式为39.5
H could be Momentary type 32.5 Latching type 39.5



HBS1GQ 金属按钮系列



HBS1GQ Series Metal Pushbutton Switches



HBS1GQ-11ET

HBS1GQ-11ET

HBS1GQ22F-11

HBS1GQ22F-11E

HBS1GQ22F-11E

HBS1GQ25F-11

- 安装孔尺寸: $\varnothing 19\text{mm}$
- 头部形状: 半圆形环状带电源符号
- 开关额定值: 5A/250VAC
- 开关组合: 1NO 1NC
- 操作类型: 自复式/自锁式
- 接线类型: 接线柱
- 灯珠颜色: 红/绿/黄/橙/蓝/白(双色可选)
- 外壳材料: 不锈钢
- 防护等级: IP65, IK10

- 安装孔尺寸: $\varnothing 19\text{mm}$
- 头部形状: 半圆形环状带电源符号
- 开关额定值: 5A/250VAC
- 开关组合: 1NO 1NC
- 操作类型: 自复式/自锁式
- 接线类型: 接线柱
- 灯珠颜色: 红/绿/黄/橙/蓝/白(双色可选)
- 外壳材料: 不锈钢
- 防护等级: IP65, IK10

- 安装孔尺寸: $\varnothing 22\text{mm}$
- 头部形状: 半圆形
- 开关额定值: 5A/250VAC
- 开关组合: 1NO 1NC
- 操作类型: 自复式/自锁式
- 接线类型: 接线柱
- 外壳材料: 不锈钢
- 防护等级: IP65, IK10

- 安装孔尺寸: $\varnothing 22\text{mm}$
- 头部形状: 半圆形环状带灯
- 开关额定值: 5A/250VAC
- 开关组合: 1NO 1NC
- 操作类型: 自复式/自锁式
- 接线类型: 接线柱
- 灯珠颜色: 红/绿/黄/橙/蓝/白(双色可选)
- 外壳材料: 不锈钢
- 防护等级: IP65, IK10

- 安装孔尺寸: $\varnothing 22\text{mm}$
- 头部形状: 半圆形环状带电源符号
- 开关额定值: 5A/250VAC
- 开关组合: 1NO 1NC
- 操作类型: 自复式/自锁式
- 接线类型: 接线柱
- 灯珠颜色: 红/绿/黄/橙/蓝/白(双色可选)
- 外壳材料: 不锈钢
- 防护等级: IP65, IK10

- 安装孔尺寸: $\varnothing 25\text{mm}$
- 头部形状: 半圆形
- 开关额定值: 5A/250VAC
- 开关组合: 1NO 1NC
- 操作类型: 自复式/自锁式
- 接线类型: 接线柱
- 外壳材料: 黄铜镀铬/不锈钢
- 防护等级: IP65, IK10

- Mounting Hole Size: $\varnothing 19\text{mm}$
- Shape: Flat Round Ring Illuminated Power Symbol
- Switch Rating: 5A/250VAC
- Contact Configuration: 1NO 1NC
- Operation Type: Momentary/Latching
- Terminal Type: Pin Terminal
- Lamp Color: Red/Green/Yellow/Orange Blue/White(Could be bi-color LED)
- The Crust Material: Stainless Steel
- Protection Degree: IP65, IK10

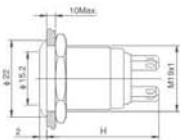
- Mounting Hole Size: $\varnothing 19\text{mm}$
- Shape: Flat Round Ring Illuminated Power Symbol
- Switch Rating: 5A/250VAC
- Contact Configuration: 1NO 1NC
- Operation Type: Momentary/Latching
- Terminal Type: Screw Terminal
- Lamp Color: Red/Green/Yellow/Orange Blue/White(Could be bi-color LED)
- The Crust Material: Stainless Steel
- Protection Degree: IP65, IK10

- Mounting Hole Size: $\varnothing 22\text{mm}$
- Shape: Flat Round
- Switch Rating: 5A/250VAC
- Contact Configuration: 1NO 1NC
- Operation Type: Momentary/Latching
- Terminal Type: Screw Terminal
- The Crust Material: Stainless Steel
- Protection Degree: IP65, IK10

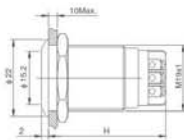
- Mounting Hole Size: $\varnothing 22\text{mm}$
- Shape: Flat Round Ring Illuminated
- Switch Rating: 5A/250VAC
- Contact Configuration: 1NO 1NC
- Operation Type: Momentary/Latching
- Terminal Type: Screw Terminal
- Lamp Color: Red/Green/Yellow/Orange Blue/White(Could be bi-color LED)
- The Crust Material: Stainless Steel
- Protection Degree: IP65, IK10

- Mounting Hole Size: $\varnothing 22\text{mm}$
- Shape: Flat Round Ring Illuminated Power Symbol
- Switch Rating: 5A/250VAC
- Contact Configuration: 1NO 1NC
- Operation Type: Momentary/Latching
- Terminal Type: Screw Terminal
- Lamp Color: Red/Green/Yellow/Orange Blue/White(Could be bi-color LED)
- The Crust Material: Stainless Steel
- Protection Degree: IP65, IK10

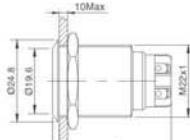
- Mounting Hole Size: $\varnothing 25\text{mm}$
- Shape: Flat Round
- Switch Rating: 5A/250VAC
- Contact Configuration: 1NO 1NC
- Operation Type: Momentary/Latching
- Terminal Type: Screw Terminal
- The Crust Material: Stainless Steel
- Protection Degree: IP65, IK10



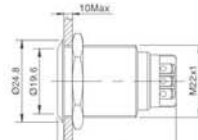
H型, 自锁式为33 自锁式为38
H could be Momentary type 33 Latching type 38



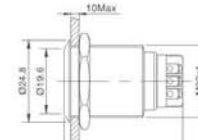
H型, 自锁式为33.5 自锁式为39.5
H could be Momentary type 33.5 Latching type 39.5



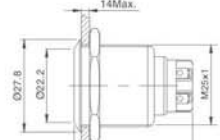
H型, 自锁式为34 自锁式为40
H could be Momentary type 34 Latching type 40



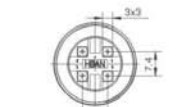
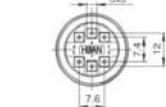
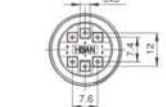
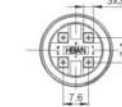
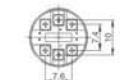
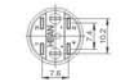
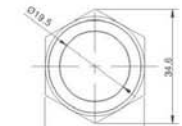
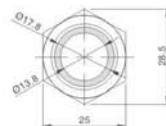
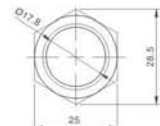
H型, 自锁式为34 自锁式为40
H could be Momentary type 34 Latching type 40



H型, 自锁式为34 自锁式为40
H could be Momentary type 34 Latching type 40



H型, 自锁式为34 自锁式为40
H could be Momentary type 34 Latching type 40



HBS1GQ 金属按钮系列



HBS1GQ25F-11E

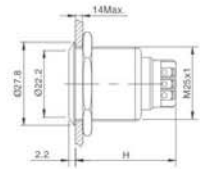
- 安装孔尺寸: Ø25mm
- 头部形状: 平圆环灯型带灯
- 开关额定值: 5A/250VAC
- 开关组合: 1NO 1NC
- 操作类型: 自复式/自锁式
- 接线类型: 接线柱
- 灯珠颜色: 红/绿/黄/橙/蓝/白(双色可选)
- 外壳材料: 不锈钢
- 防护等级: IP65, IK10

HBS1GQ25F-11ET

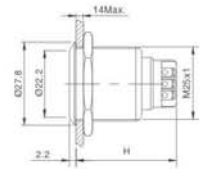
- 安装孔尺寸: Ø25mm
- 头部形状: 平圆环灯型带电源符号
- 开关额定值: 5A/250VAC
- 开关组合: 1NO 1NC
- 操作类型: 自复式/自锁式
- 接线类型: 接线柱
- 灯珠颜色: 红/绿/黄/橙/蓝/白(双色可选)
- 外壳材料: 不锈钢
- 防护等级: IP65, IK10

HBS1GQ30F-11

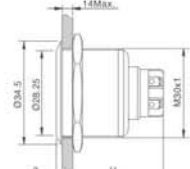
- 安装孔尺寸: Ø30mm
- 头部形状: 平圆环
- 开关额定值: 5A/250VAC
- 开关组合: 1NO 1NC
- 操作类型: 自复式/自锁式
- 接线类型: 接线柱
- 外壳材料: 不锈钢
- 防护等级: IP65, IK10



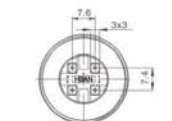
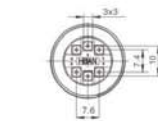
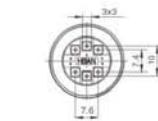
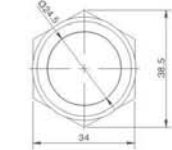
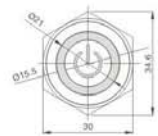
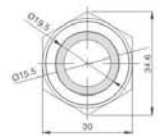
HBS1GQ25F-11E 自锁式/40
H could be: Momentary type 34 Latching type 40



HBS1GQ25F-11ET 自锁式/40
H could be: Momentary type 34 Latching type 40



HBS1GQ30F-11 自锁式/40
H could be: Momentary type 34 Latching type 40



HBS1GQ Series Metal Pushbutton Switches

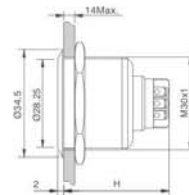


HBS1GQ30F-11E

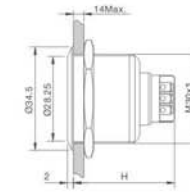
- 安装孔尺寸: Ø30mm
- 头部形状: 平圆环灯型带灯
- 开关额定值: 5A/250VAC
- 开关组合: 1NO 1NC
- 操作类型: 自复式/自锁式
- 接线类型: 接线柱
- 灯珠颜色: 红/绿/黄/橙/蓝/白(双色可选)
- 外壳材料: 不锈钢
- 防护等级: IP65, IK10

HBS1GQ30F-11ET

- 安装孔尺寸: Ø30mm
- 头部形状: 平圆环灯型带电源符号
- 开关额定值: 5A/250VAC
- 开关组合: 1NO 1NC
- 操作类型: 自复式/自锁式
- 接线类型: 接线柱
- 灯珠颜色: 红/绿/黄/橙/蓝/白(双色可选)
- 外壳材料: 不锈钢
- 防护等级: IP65, IK10



HBS1GQ30F-11E 自锁式/40
H could be: Momentary type 34 Latching type 40



HBS1GQ30F-11ET 自锁式/40
H could be: Momentary type 34 Latching type 40

