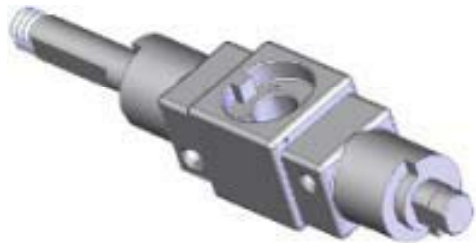


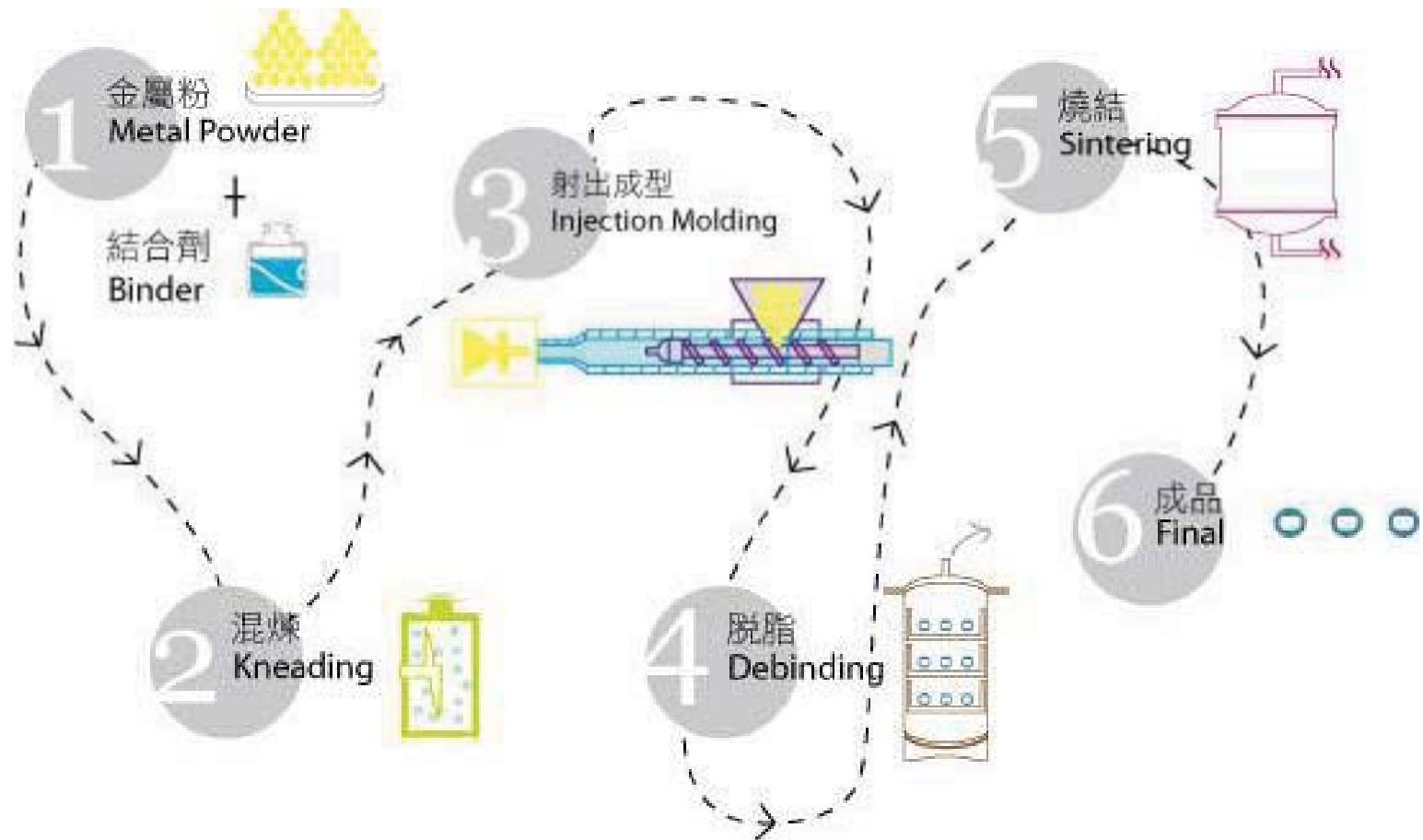
# Metal Injection Molding ( MIM )



# MIM Application

- Computer and computer accessory
- Digital camera, Handheld Digital Video Camera and Mobile Devices.
- Medical & Dental parts
- Micro device components.
- Automotive components
- Tools Parts
- Chemical device parts
- Sports devices parts
- Home application components
- Jewelry
- Navigation device components

# MIM Production Processes



# MIM Samples

Cell Phone Parts



Optical Connector



Cell Phone Key-Coating



Polishing

Car electronic Parts



Cell Phone Parts



hinge Parts



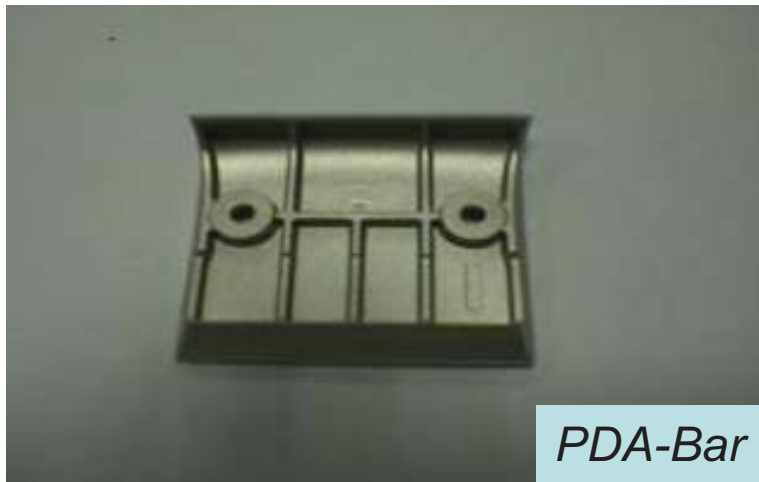
3C Parts



Cell Phone Stand



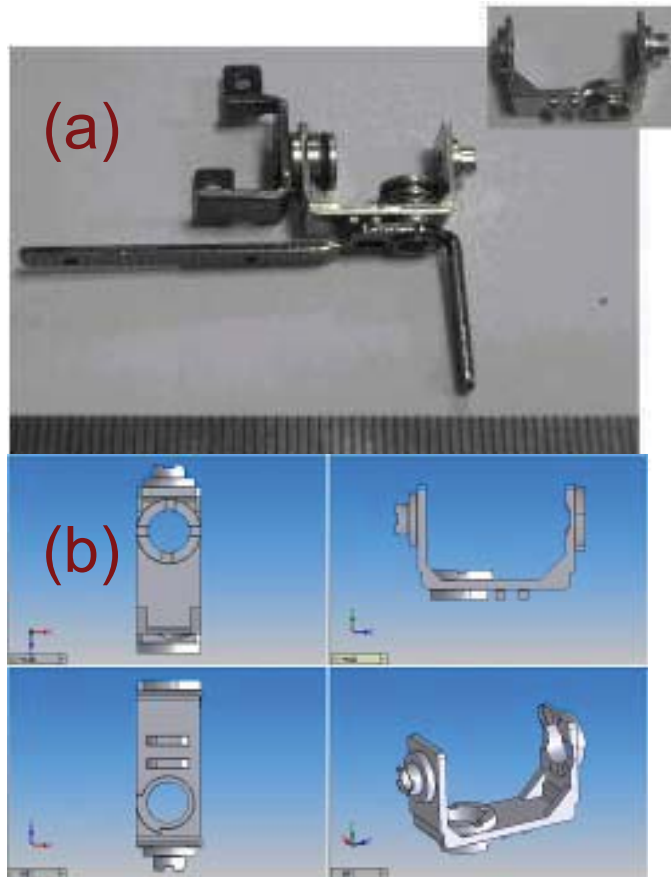
# MIM Samples



# MIM Samples



## Example - MIM Part for DV Hinges



### Functions:

- Two rotary directions with position setting.
- Provide the force to position and ramp up.
- Provide the circuit hole for electric wire to go through.

### Characteristics by using MIM:

- Combine 5 components into a single part
- Higher strength of parts
- Greater design-flexibility
- Better stability after assembly
- Smaller tolerance after assembly
- Lower management cost of components

Digital video hinges using MIM technology: (a) assembled hinge, (b) Metal injection molded U-shaped bracket

# MIM Bearing



Monitor could be rotated



Components are reduced from 27 to 13

# Competitive Advantages

- **Professional MIM Team**
  - Provide customers with a total solution from design, tooling to mass production
- **Flexible Material Choices**
- **Vertically Integrated Production Capability**
- **Abundant Manufacturing Experience**
  - Offer the most appropriate method of production
- **Advanced Equipment & Sufficient Capacity**
  - Vacuum furnace x 12, Injection molding machine x 52
- **Strict Quality Control (ISO 9001 : 2000 & ISO 14001 Approval)**
  - Deliver reliable quality