

# INTERCONNECTION

## Isolated Strips and Blocks

- Enables connecting of additional wires without cutting main conductor
- Capacity from 2x6mm<sup>2</sup> to 2x150mm<sup>2</sup>
- Up to 35mm<sup>2</sup> supplied as 12 pole strips, easily divided
- 50mm<sup>2</sup> and above supplied singularly, easily interlocked
- 50mm<sup>2</sup> and above available with Allen screws
- Supplied with raised screws
- Halogen free
- CE approved

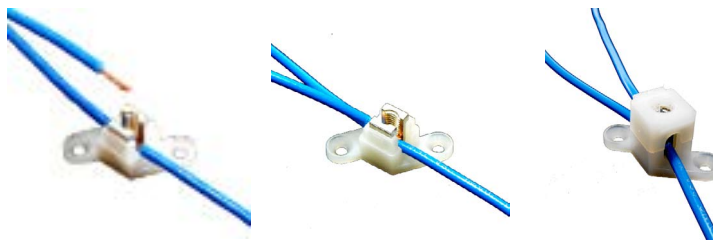


SPECIFICATION		
Voltage max	CISB6-35	500V
	CISB50-150	1000V
Working temperature	-30°C to + 110°C	
Moulding	Natural UL94-V2 self extinguishing PA6	
Insert	Nickel Plated Brass	
Screws	Zinc-plated brass	

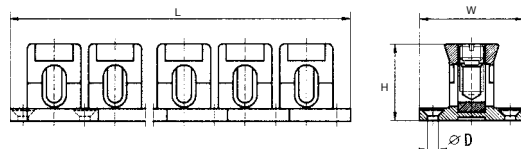


TYPE NO.	POLES	CURRENT RATING	CAPACITY		LENGTH	WIDTH	HEIGHT	FIXING HOLE DIAMETER	TERMINAL SCREW	ALLEN SCREW OPTION
			MIN	MAX						
CISB6	12	41A	2x2.5mm <sup>2</sup>	2x6mm <sup>2</sup>	188mm	29mm	17mm	3.2mm	M5	
CISB10	12	57A	2x4mm <sup>2</sup>	2x10mm <sup>2</sup>	224mm	31mm	23mm	3.2mm	M7	
CISB16	12	76A	2x6mm <sup>2</sup>	2x16mm <sup>2</sup>	260mm	32mm	26mm	3.2mm	M8	
CISB35	12	125A	2x16mm <sup>2</sup>	2x35mm <sup>2</sup>	308mm	36mm	34mm	3.2mm	M12	
CISB50	1	150A	2x25mm <sup>2</sup>	2x50mm <sup>2</sup>	32mm	63mm	48mm	5.2mm	M14	5
CISB70	1	192A	2x35mm <sup>2</sup>	2x70mm <sup>2</sup>	34mm	63mm	53mm	5.2mm	M16	6
CISB95	1	232A	2x50mm <sup>2</sup>	2x95mm <sup>2</sup>	39mm	63mm	56mm	5.2mm	M18	8
CISB120	1	269A	2x70mm <sup>2</sup>	2x120mm <sup>2</sup>	41mm	70mm	61mm	5.2mm	M20	8
CISB150	1	309A	2x95mm <sup>2</sup>	2x150mm <sup>2</sup>	56.8mm	115mm	82mm	5.2mm	M28	14

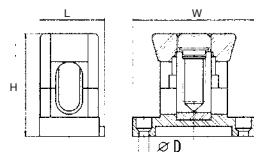
Allen Screw Option available on 1-pole types, add suffix /A to Type No. (e.g. CISB120/A)



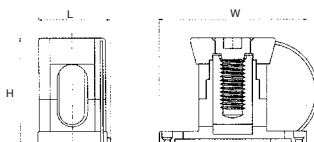
CISB 12 pole



CISB 1 pole



CISB 150



PCB  
TERMINAL  
BLOCKS

INTER-  
CONNECTION

FUSES &  
FUSE-  
HOLDERS

LEDs &  
INDICATORS

MINIATURE  
SWITCHES

LIMIT &  
SAFETY  
SWITCHES

CONTROL  
PRODUCTS

INTERFACE  
MODULES &  
SUPPORTS

RELAY  
BASES

ENCLOSURES

BATTERIES

TRANS-  
FORMERS