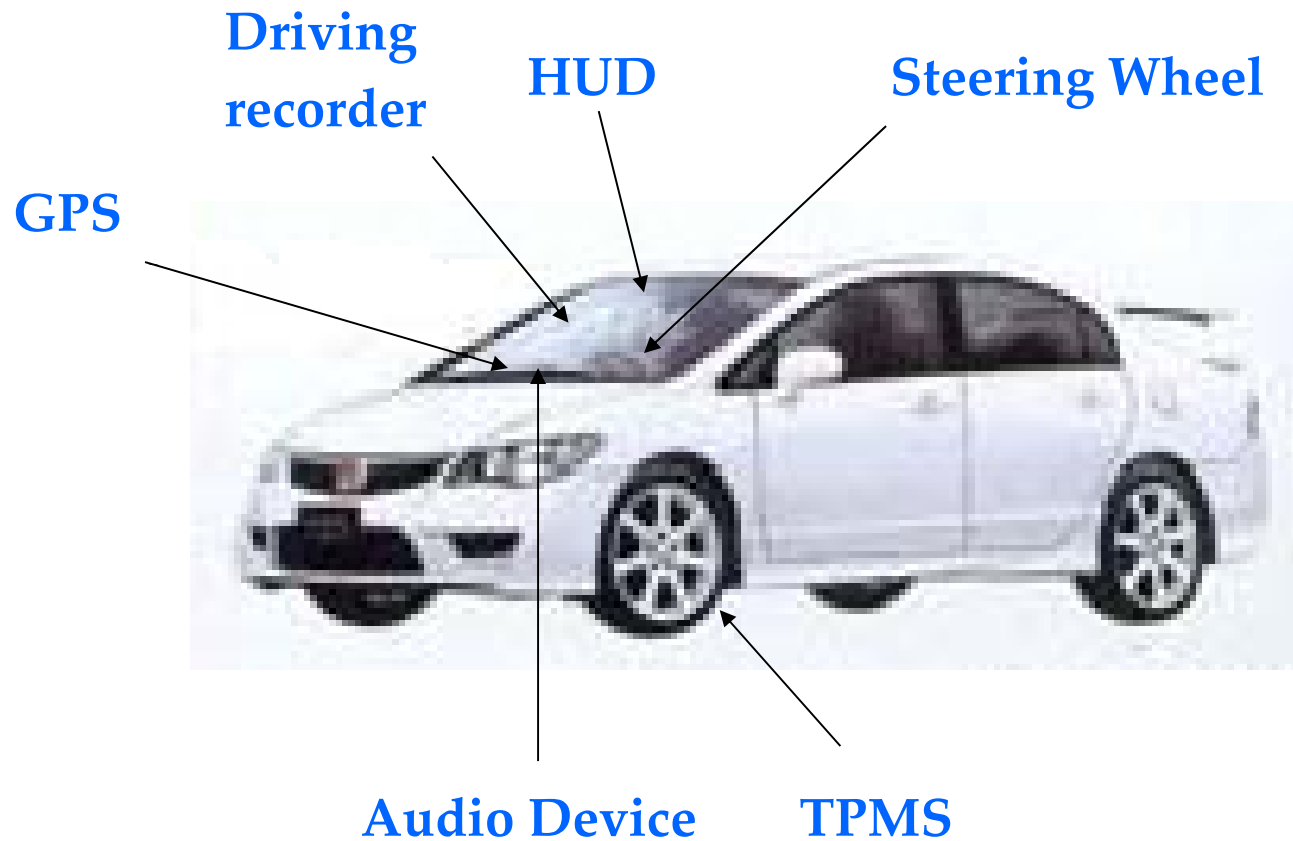




Automotive application





◆ **Tact Switch**

DTS(G)MW-6

DTSM-6

DTSL-6

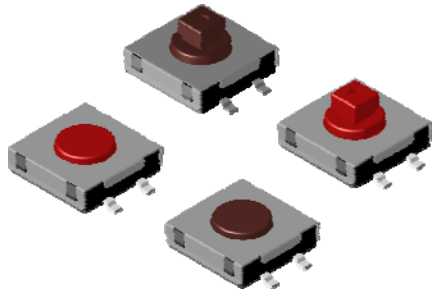
TMG-5

DTSMW-2

DTSJW1



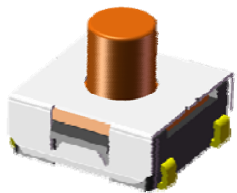
Tact Switch for Steering Wheel



DTSMW-2

Features:

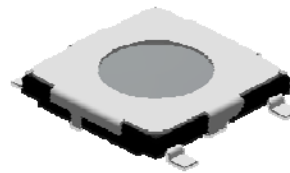
- Available with height of 4.3mm & 7.3mm
- Thru-hole & SMT type
- Sealed with IP67 rating



DTSJW1

Features:

- 6x6 mm
- Sealed with IP67 rating
- Gold plating



TMG-5

Features:

- 5x5 mm
- Available with height of 0.8 mm & 1.5 mm
- SMT & J SMT type

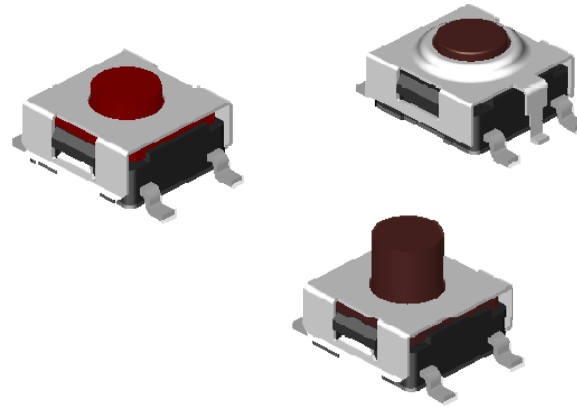


Tact Switch for Steering Wheel

DTS(G)MW-6

Features:

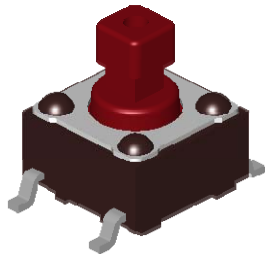
- 6x6mm
- Gull-Wing SMT
- Sealed with IP57 rating



DTSM-6

Features:

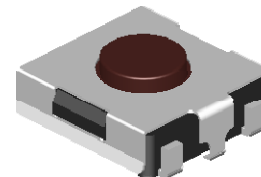
- 6x6mm
- Surface Mounting Type
- Ground Terminal Optional



DTSL-6

Features:

- 6x6mm
- Thinner Type with Ground Terminal
- Pitch 4.0mm





◆ Tact Switch

PT, MPT

1188, TAC-3, TMG-3

DTSM-6, DTSL-6, LTL-6

DTSGZM-6, DTS(G)MW-6

DTSM-3, DTS-2, DTSMW-2

◆ Right Angle Tact Switch

DTSA-6, TA(S)-6

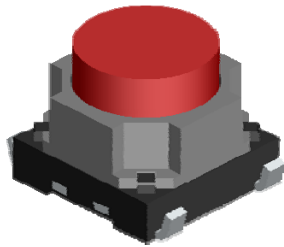
TLLA-7

◆ 4-directional Switch

MT5

TT5

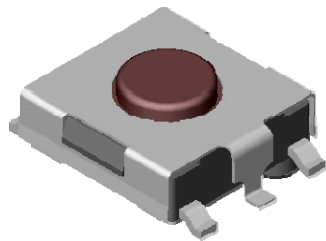
Tact Switch for Audio Device



LTL-6

Features:

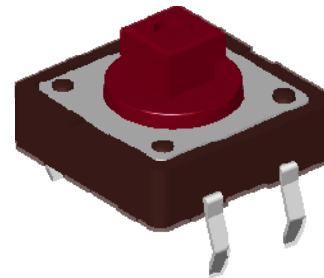
- Long travel 1.3mm
- Excellent Tactile Feeling Without Click Sound
- Low Contact Resistance



DTSGZM-6

Features:

- 6x6mm
- Thinner Type with Ground Terminal
- Pitch 4.5 mm



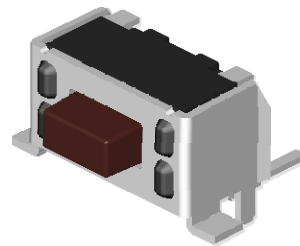
DTS-2

Features:

- 12x12mm
- Through Hole & Right Angle Type



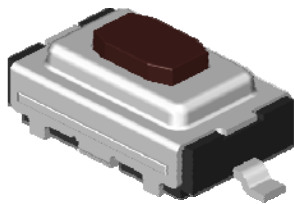
Tact Switch for Audio Device



TAC-3

Features:

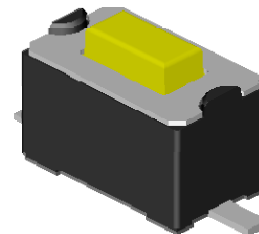
- 4x7mm
- SMT & Side Push Type
- With Support Terminal



TMG-3

Features:

- 3.5x6mm
- Thinner Type
- H: 2.5mm

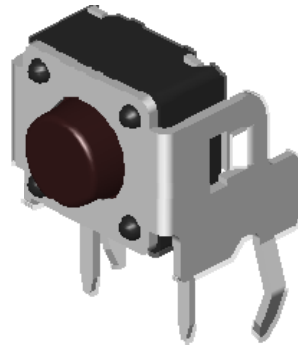


DTSM-3

Features:

- 3.5x6mm
- SMT Type

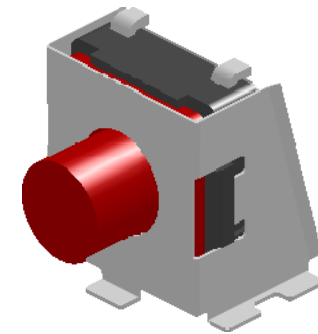
Right Angle Tact Switch for Audio Device



DTSA-6

Features:

- 6x6mm
- Right Angle & Ground Terminal Type



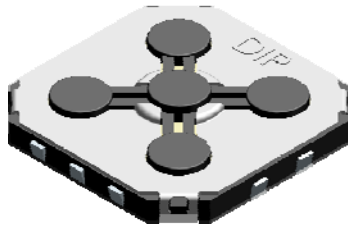
TA(S)-6

Features:

- 6x6mm
- SMT & Side Push
- Washable Type



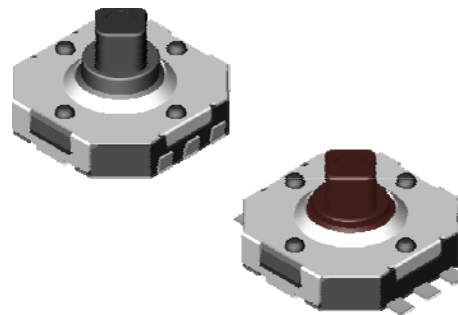
4-direction Switch for Audio Device



TT5

Features:

- Low-Profile : 9.8 x 9.8 x 1.55mm
- High operation force : side 1.6N and center 3.2N



MT5

Features:

- 7.4x7.7mm
- Reflow solderable



◆ Tact Switch

T3BL
T3AL
T4B
MTA

◆ Illuminated Tact Switch

TLLA-7

Tact Switch for Blue Tooth Headset



T4B

Features:

- 4.8 x 4.8 x 0.5 mm Low-profile type
- J Terminal SMT type
- Sharp tactile feeling

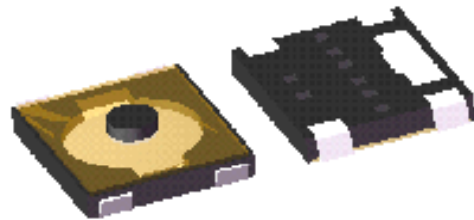


MTA

Features:

- 1.8 x 4.5 mm Side Push Sealed Type
- Miniature type
- Washable

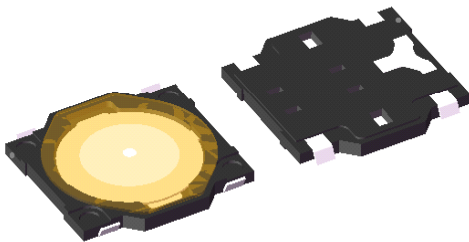
Tact Switch for Blue Tooth Headset



T3AL

Features:

- Compact-sized 3x2.6mm
- H: 0.65mm with an actuator
- J Terminal SMT type



T3BL

Features:

- Compact-sized 3.7x3.7mm
- Low-profile, H:0.35mm
- J Terminal SMT type

Illuminated Switch for Blue Tooth Headset



TLLA

Features:

- 7 X 7.4 mm
- Right Angle Type Illuminated Switch
- Through hole type
- LED color option
- Cap replaceable



◆ **Slide Switch**

SE14
SS3
SD12

◆ **Double Action Type Tact Switch**

M2B
M2A
M2C

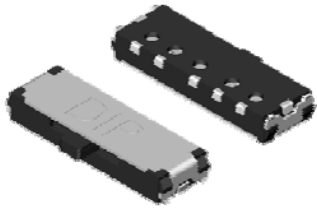
◆ **Tact Switch**

1188
MTA
PT

◆ **Push Lever Switch**

PLJG
PL3

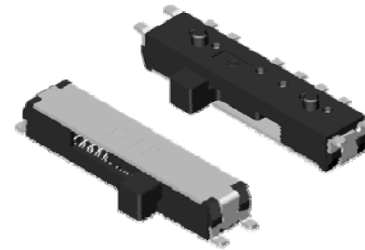
Slide Switch for GPS



SE14

Features:

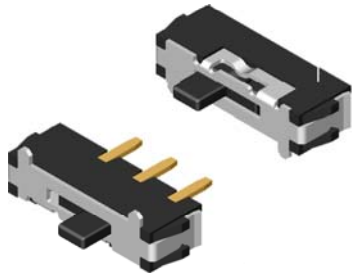
- 1P4T Type
- Side Actuation
- Recoil type



SD12

Features:

- 1P3T Type
- Side Actuation
- Recoil type



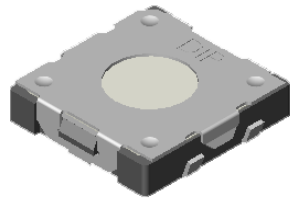
SS3

Features:

- 1P2T Type
- Side and Vertical Actuation
- Recoil type



Double Action Tact Switch for GPS



M2B

Features:

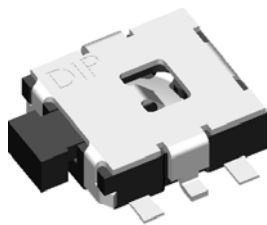
- Miniature Double action
- 6.4 x 6.5 mm, H: 3.0 / 3.8 mm
- 1 pole 2 throw



M2A

Features:

- Miniature Double action Tact Switch
- Low-Profile 6.0 x 6.4 x 0.9mm



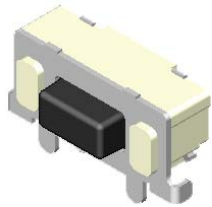
M2C

Features:

- Horizontal Type Double Action
- Suitable for high-density mounting
- Push once to turn on the first position, push again to turn on the second position



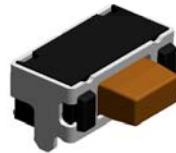
Tact Switch for GPS



1188

Features:

- 3.5 x 6 mm
- Extra Thin Side Push
- Post & Support Bracket available



MTA

Features:

- 1.8 x 4.5 mm Side Push Sealed Type
- Miniature type
- Washable



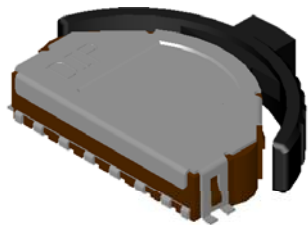
PT

Features:

- 3.5 x 4.7 mm
- Side Push & Vertical Push Type
- Miniature type



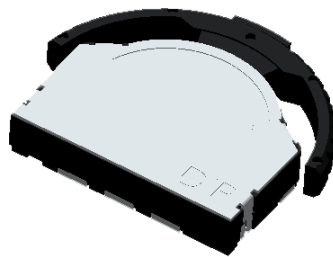
Push Lever Switch for GPS



PLJ

Features:

- Push & Lever Switch
- Ground terminal available
- Halogen free type available



PL3

Features:

- Push & Lever Switch
- Three contacts
- Halogen free type available



◆ Tact Switch

TAE
IPT
MPT



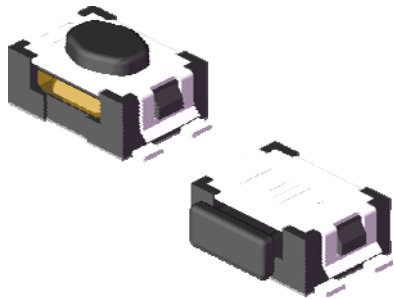
Tact Switch for Car Key



TAE

Features:

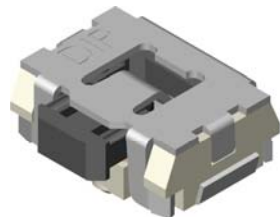
- 3.8x6 mm Thinner Type
- Dust-proof: IP50
- Long Travel: 0.3mm



IPT

Features:

- 2.8 x 2.8 mm
- Side Push & Vertical Push Type
- Easy for pick and place

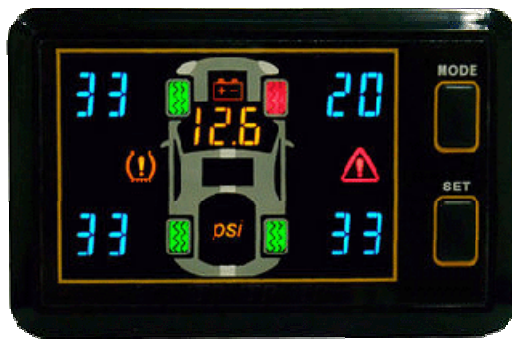


MPT

Features:

- 2.9 x 3.9 mm
- Side Push & Vertical Push Type
- Miniature type

Other Applications



TPMS



Driving recorder



HUD (Head Up Display)

Diptronics' Capability



- ◆ TS16949 Certificated
- ◆ Variety switch solution
- ◆ Quick delivery
- ◆ Customized switch doable