

SPDT

Model No.	Switching Position		
	601	ON	NONE
2-1		OPEN	2-3



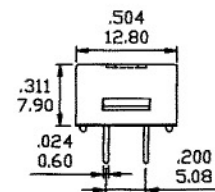
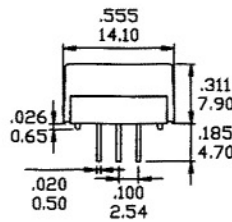
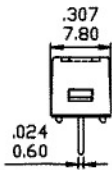
DPDT

Model No.	Switching Position		
	602	ON	NONE
2-1,5-4		OPEN	2-3,5-6

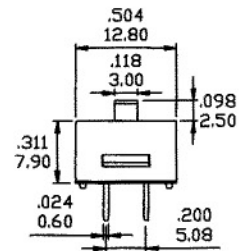
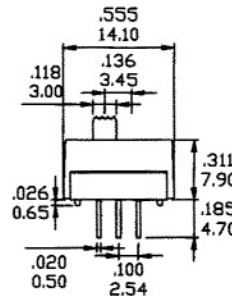
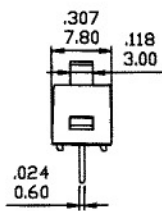


BUTTON OPTIONS

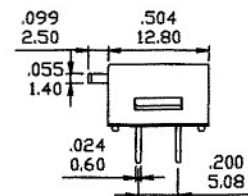
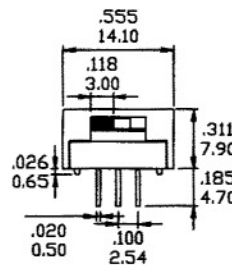
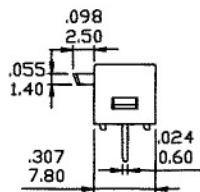
S1 FLUSH BUTTON



S2 TOP BUTTON



S3 SIDE BUTTON



S4 SIDE BUTTON (DPDT ONLY)

