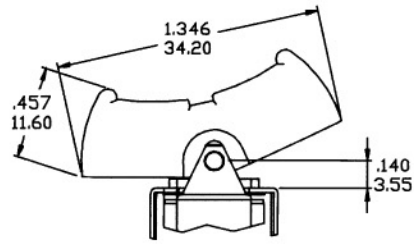
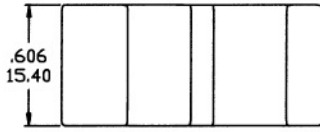
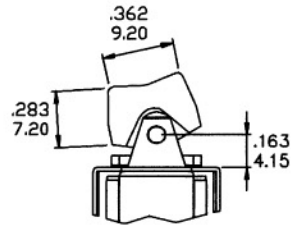
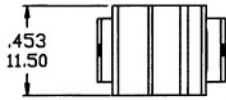


ACTUATOR OPTIONS FOR P.C. MOUNT

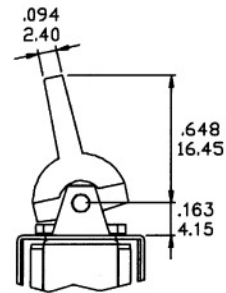
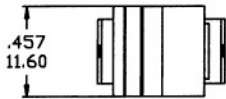
R5



R6

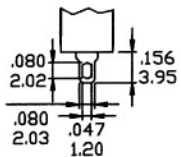


R7



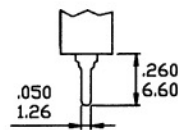
TERMINATION OPTIONS

M1 STD. SOLDER LUG



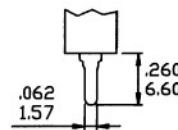
THK .030 (0.75)

M2 PC THRU-HOLE



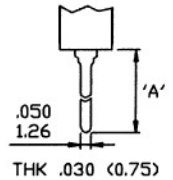
THK .030 (0.75)

M3 QUICK CONNECT



THK .030 (0.75)

M5 WIRE WRAP



OPTION CODE	DIM. 'A'
M5-1	.750(19.05)
M5-2	.964(24.48)
M5-3	.425(10.80)
M5-4	1.062(26.97)