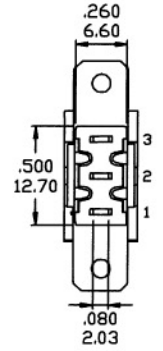
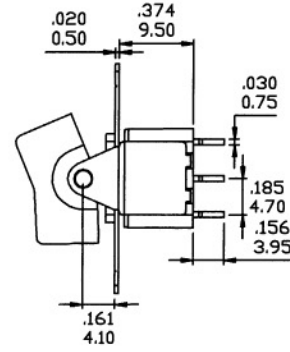
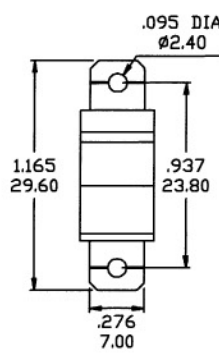
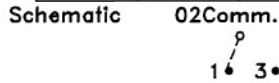


SPDT



Model No.	Switching Position		
SP-1	ON	NONE	ON
SP-2	ON	NONE	(ON)
SP-3	ON	OFF	ON
SP-4	(ON)	OFF	(ON)
SP-5	ON	OFF	(ON)
Term. Comm.	2-3	OPPEN	2-1

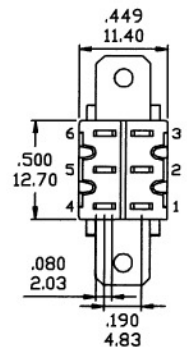
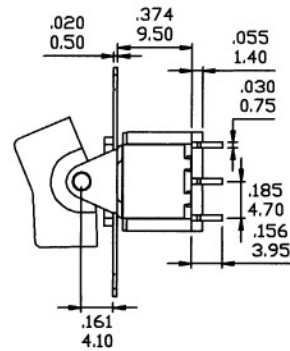
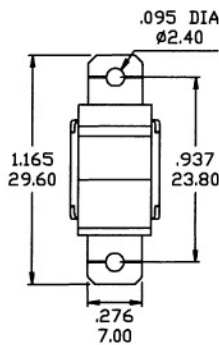
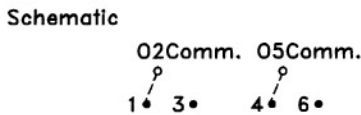


DPDT

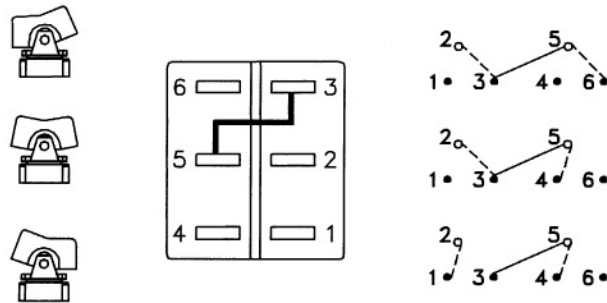


Model No.	Switching Position		
DP-1	ON	NONE	ON
DP-2	ON	NONE	(ON)
DP-3	ON	OFF	ON
DP-4	(ON)	OFF	(ON)
DP-5	ON	OFF	(ON)
Term. Comm.	2-3,5-6	OPPEN	2-1,5-4

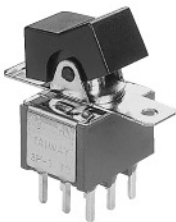
Model No.	Switching Position		
DP-6	ON	ON	ON
DP-7	(ON)	ON	(ON)
DP-8	ON	ON	(ON)
DP-9	OFF	OFF	(ON)
Term. Comm.	2-3,5-6	2-3,5-4	2-1,5-4



WIRING FOR ON-ON-ON (3-WAY) FUNCTION



3PDT



Model No.	Switching Position		
3P-1	ON	NONE	ON
3P-2	ON	NONE	(ON)
3P-3	ON	OFF	ON
3P-4	(ON)	OFF	(ON)
3P-5	ON	OFF	(ON)
Term. Comm.	2-3,5-6 8-9	OPPEN	2-1,5-4 8-7

